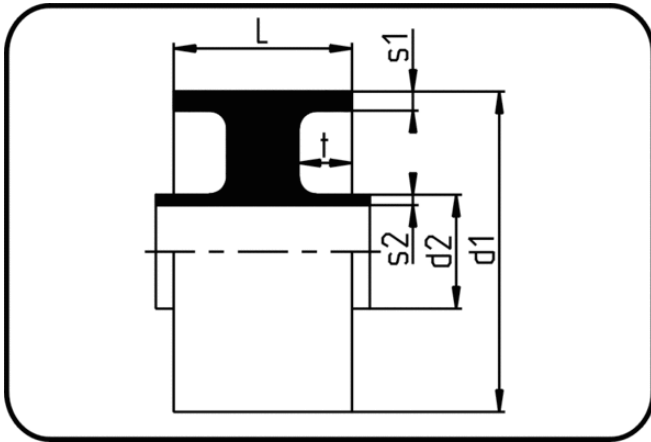


PP/PP Simultanschweissung



Code: 137

- Festpunkt Typ I
- ohne Cut Out
- mechanisch gefertigt
- **Simultanschweissung**
- **PP/PP**

| Dimension | Code | Detail | L mm | s1 mm | s2 mm | d1 mm | d2 mm | t mm | Gewicht |
|-----------|----------------|------------------|---------|----------|----------|----------|----------|---------|---------|
| 160/90 | 80.137.1690.37 | 160/90 SDR33/17 | 50 | 4,9 | 5,4 | 160 | 90 | 15 | 0.63 |
| 160/90 | 80.137.1690.31 | 160/90 SDR33/11 | 50 | 4,9 | 8,2 | 160 | 90 | 15 | 0.50 |
| 280/160 | 80.137.2816.31 | 280/160 SDR33/11 | 50 | 8,6 | 14,6 | 280 | 160 | 15 | 1.40 |
| 315/200 | 80.137.3120.31 | 315/200 SDR33/11 | 50 | 9,7 | 18,2 | 315 | 200 | 15 | 2.51 |
| 355/250 | 80.137.3525.31 | 355/250 SDR33/11 | 50 | 10,9 | 22,8 | 355 | 250 | 15 | 2.30 |