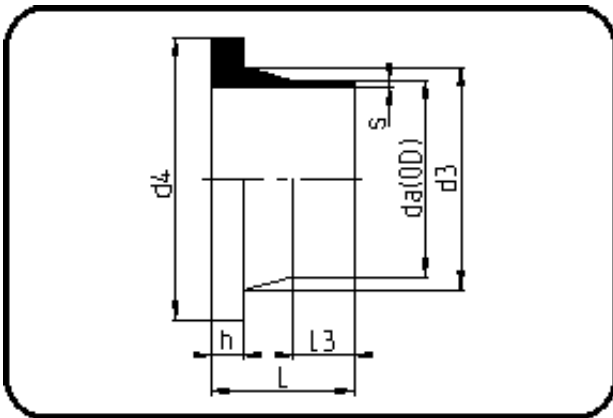


Kurzschenkelige Fittings



Code: 012

- **Vorschweissbund DIN**
- kurze Schenkel
- formgespritzt
- **Stumpfschweissung**
- **PE 100-RC schwarz**

Flansche finden Sie bitte unter Zubehör.

| Dimension | Code | Detail | Gewicht |
|-----------|----------------|---------------------------|---------|
| 400 | 70.012.0400.26 | 400X15,3 SDR26 ISO S-12,5 | 6.25 |

| | Einheit | Nominale | Tol+ | Tol- |
|--------|---------|----------|------|------|
| da(OD) | mm | 400 | 3.60 | 0.00 |
| L | mm | 155 | 6.00 | 0.00 |
| L3 | mm | 75 | 3.00 | 0.00 |
| s | mm | 15,3 | 1.70 | 0.00 |
| d3 | mm | 427 | 0.00 | 7.50 |
| h | mm | 33 | 1.50 | 0.00 |
| d4 | mm | 482 | 0.00 | 1.50 |