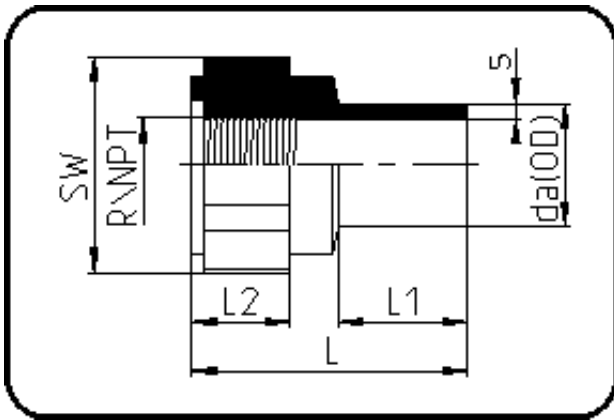


## Fittings with short Spigot



Code: 032.1

- Adaptor Female Thread
- NPT-thread/FRP-reinforced
- injection moulded
- **Butt-welding**
- PPR grey

Dimension	Code	Detail	Weight
50	11.032.5051.11	50X1 1/2" SDR11 ISO S-5	0.09

	Unit	Nominale	Tol+	Tol-
da(OD)	mm	50	0.50	0.00
L	mm	68	3.00	3.00
L1	mm	34	1.50	1.50
NPT	inch	1,5	0.00	0.00
SW	mm	70	2.25	2.25
L2	mm	25,5	1.50	1.50
s	mm	4,6	0.60	0.00