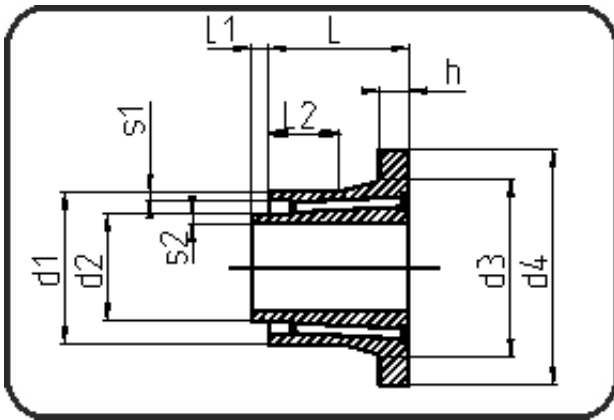


## PPR Poly-Flo



Code: 194.1

- Poly-Flo Stub Flange
- Flow-Through
- machined
- **simultaneous + cascade welding**
- PPR grey

| Dimension | Code           | Detail         | Weight |
|-----------|----------------|----------------|--------|
| 90/63     | 11.194.9064.71 | 90/63 SDR17/11 | 0.38   |

|    | Unit | Nominale | Tol+ | Tol- |
|----|------|----------|------|------|
| L  | mm   | 72       | 3.00 | 3.00 |
| L1 | mm   | 10       | 1.50 | 1.50 |
| L2 | mm   | 25       | 1.50 | 1.50 |
| d1 | mm   | 90       | 1.35 | 0.00 |
| d3 | mm   | 105      | 0.00 | 6.75 |
| s2 | mm   | 5,8      | 0.70 | 0.00 |
| d2 | mm   | 63       | 0.90 | 0.00 |
| s1 | mm   | 5,4      | 0.70 | 0.00 |
| h  | mm   | 17       | 2.25 | 0.00 |
| d4 | mm   | 138      | 0.00 | 2.25 |