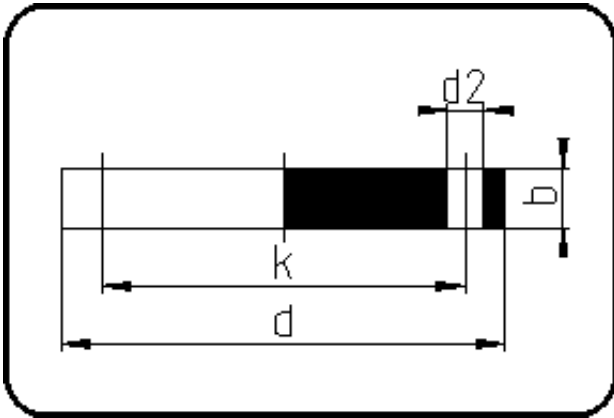


## Backing Rings, Accessories



Code: 30.334

- Blind Flange no steel insert
- DIN/pressureless applications
- machined/drilled PN10
- **Flange connection**
- PVDF natural

Dimension	Code	Detail	Weight
32	30.334.0032.00	32	0.40

	Unit	Nominale	Tol+	Tol-
da(OD)	mm	32	0.00	0.00
b	mm	19	3.00	0.00
DN	mm	25	0.00	0.00
numb	pc	4	0.00	0.00
d	mm	115	0.75	0.75
d2	mm	14	0.75	0.75
K	mm	M12	0.00	0.00
k	mm	85	0.75	0.75