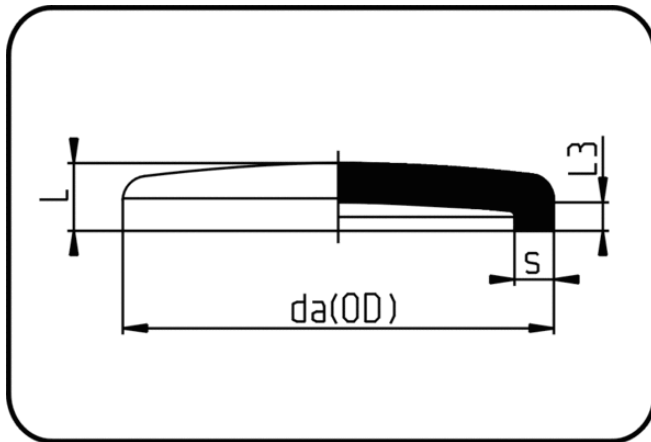


Fittings with short Spigot



Code: 004

- End Cap
- short spigot
- injection moulded
- **Butt-welding**
- **PPR grey**

Dimension	Code	Detail	da(OD) mm	s mm	L mm	L3 mm	Weight
355	11.004.0355.11	355X32,2 SDR11 ISO S-5	355	32,2	124	63	6.06
400	11.004.0400.11	400X36,3 SDR11 ISO S-5	400	36,3	133	72	8.22
450	11.004.0450.11	450X40,9 SDR11 ISO S-5	450	40,9	140	64	10.75
500	11.004.0500.11	500X45,4 SDR11 ISO S-5	500	45,4	148	65	13.85