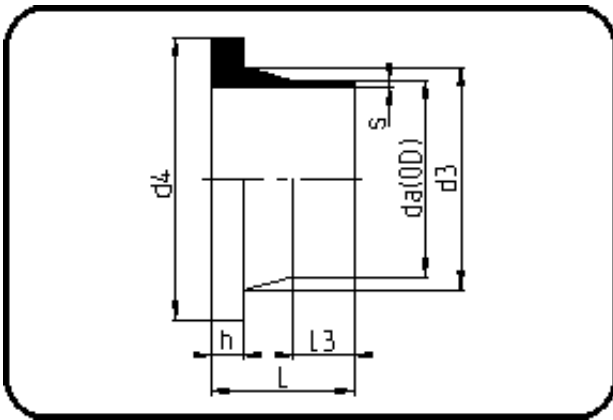


Fittings with short Spigot



Code: 012

- Stub Flange DIN
- short spigot
- injection moulded
- **Butt-welding**
- **PE 100-RC black**

Backing Rings please see Accessories.

Dimension	Code	Detail	Weight
315	70.012.0315.11	315X28,6 SDR11 ISO S-5	5.00

	Unit	Nominale	Tol+	Tol-
da(OD)	mm	315	2.90	0.00
L	mm	136	6.00	0.00
L3	mm	65	7.50	7.50
s	mm	28,6	3.00	0.00
d3	mm	335	0.00	6.00
h	mm	35	1.50	0.00
d4	mm	370	0.00	1.50