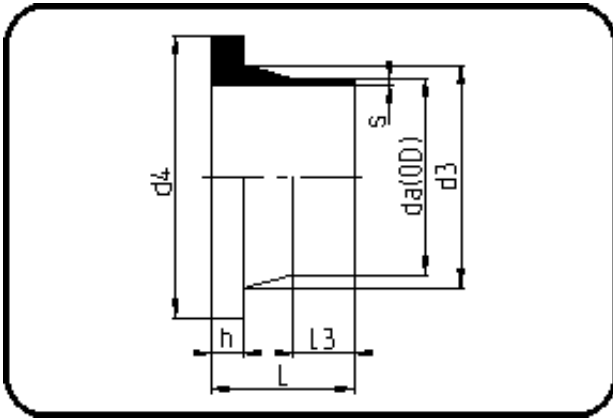


Fittings with short Spigot



Code: 012

- Stub Flange DIN
- short spigot
- injection moulded
- **Butt-welding**
- **PE 100-RC black**

Backing Rings please see Accessories.

| Dimension | Code | Detail | Weight |
|-----------|----------------|------------------------|--------|
| 355 | 70.012.0355.11 | 355X32,2 SDR11 ISO S-5 | 6.88 |

| | Unit | Nominale | Tol+ | Tol- |
|--------|------|----------|------|------|
| da(OD) | mm | 355 | 3.20 | 0.00 |
| L | mm | 150 | 6.00 | 0.00 |
| L3 | mm | 70 | 7.50 | 7.50 |
| s | mm | 32,2 | 3.40 | 0.00 |
| d3 | mm | 373 | 0.00 | 7.50 |
| h | mm | 40 | 1.50 | 0.00 |
| d4 | mm | 430 | 0.00 | 1.50 |