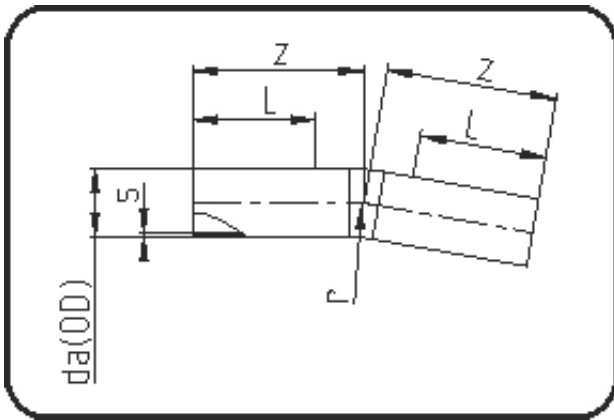


Sweep Bends



Code: 394

- Sweep Bend 11°
- radius 1.5 x OD
- formed out of pipe
- **Butt + E-fusion-welding**
- **PE 100-RC black**

Dimension	Code	Detail	Weight
560	70.394.0560.11	560 SDR11 ISO S-5 16 bar	172.00

	Unit	Nominale	Tol+	Tol-
da(OD)	mm	560	0.00	0.00
L	mm	650	0.00	0.00
r	mm	840	0.00	0.00
s	mm	50,8	0.00	0.00
z	mm	1.050	75.00	75.00